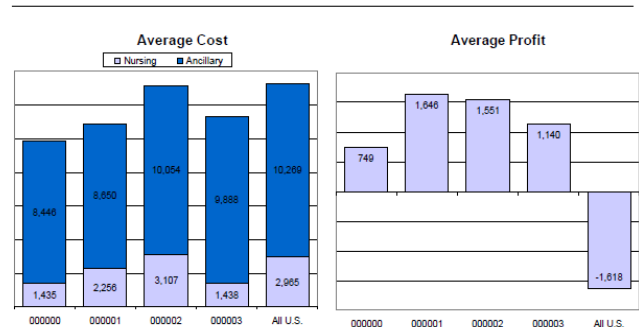


# MS-DRG Profile Report

2006 MS-DRG Profile Report Case Category Detail  
C & A Sample Hospital [000000]

**470 Major joint replacement or reattachment of lower extremity w/o MCC**

|                               | C & A Sample Hospital [000000] 2006 HCFA | Peer Hospital 1 [000001] 2006 HCFA | Peer Hospital 2 [000002] 2006 HCFA | Peer Hospital 3 [000003] 2006 HCFA | All U.S. 2006 HCFA |
|-------------------------------|--|------------------------------------|------------------------------------|------------------------------------|--------------------|
| <b>Cost Detail</b>            |  |                                    |                                    |                                    |                    |
| <b>Nursing</b>                |  |                                    |                                    |                                    |                    |
| Routine Care                  | 1,429                                    | 2,206                              | 2,894                              | 1,435                              | 2,639              |
| ICU/CCU                       | 6  | 50                                 | 223                                | 3                                  | 326                |
| <b>Subtotal</b>               | <b>1,435</b>                             | <b>2,256</b>                       | <b>3,107</b>                       | <b>1,438</b>                       | <b>2,965</b>       |
| <b>Ancillary</b>              |  |                                    |                                    |                                    |                    |
| Medical/Surgical Supplies     | 3,399                                    | 2,306                              | 3,280                              | 4,247                              | 5,547              |
| Laboratory                    | 108                                      | 308                                | 271                                | 241                                | 334                |
| Operating Room                | 3,526                                    | 4,432                              | 4,798                              | 4,027                              | 2,671              |
| Radiology                     | 88                                       | 73                                 | 156                                | 115                                | 128                |
| MRI                           | 2  | 4                                  | 0                                  | 3                                  | 4                  |
| Pharmacy                      | 562                                      | 477                                | 622                                | 420                                | 633                |
| Emergency Room                | 40                                       | 10                                 | 46                                 | 15                                 | 60                 |
| Cardiology                    | 76                                       | 17                                 | 75                                 | 163                                | 54                 |
| Blood                         | 93                                       | 172                                | 248                                | 74                                 | 159                |
| Physical/Occupational Therapy | 479                                      | 545                                | 426                                | 501                                | 536                |
| Inhalation Therapy            | 8  | 73                                 | 64                                 | 27                                 | 87                 |
| Other                         | 65                                       | 233                                | 65                                 | 55                                 | 66                 |
| <b>Subtotal</b>               | <b>8,446</b>                             | <b>8,650</b>                       | <b>10,054</b>                      | <b>9,888</b>                       | <b>10,269</b>      |
| <b>Grand Total</b>            | <b>9,881</b>                             | <b>10,906</b>                      | <b>13,161</b>                      | <b>11,326</b>                      | <b>13,234</b>      |



## REPORT SUMMARY

The MS-DRG Profile Report (MS-DPR) reports your 50 top-volume MS-DRGs and compares them to 3 peers and a group average that you select. The MS-DRG Detail section contains Cost, Charge, and Patient Demographic detailed information. The Cost and Charge information are further broken down into Nursing and Ancillary detail.

## KEY FEATURES

- Excel spreadsheet contains data on **ALL** reportable MS-DRGs
- Savings Summary provides a quick, easy-to-read examination of potential cost savings opportunities
- Provider Overview gives a detailed review of a hospital's Utilization Profile, Medicare Case Profile, & Financial Profile
- Printable PDF & Excel spreadsheet

## WHO CAN USE THE REPORT

- VPs of Finance, Directors of Finance
- Directors of Reimbursement
- Directors of Revenue Cycle
- DRG Coordinator
- CFO
- CEO

**bottom line: absolute value**